

S5/S7 for Windows:USB Prommer Driver

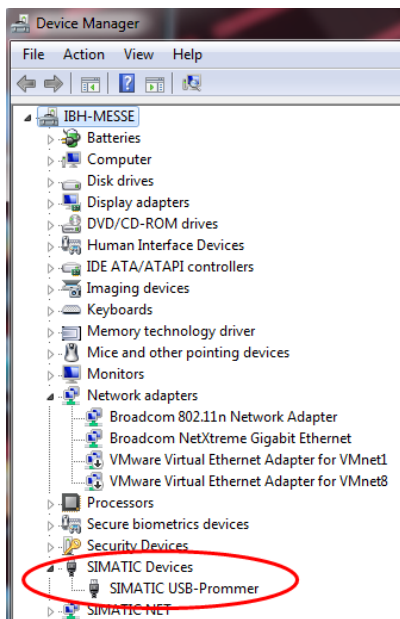
Driver support for the USB-Prommer

S5/S7 for Windows ® supports the **libusb driver** which allows the operation of the Siemens USB-Prommer ^[1] (6ES7 792-0AA00-0XA0) under current operating systems. Depending on whether the original Siemens driver for the USB-Prommer is already installed on the PC, the libusb driver must be installed in two different ways.

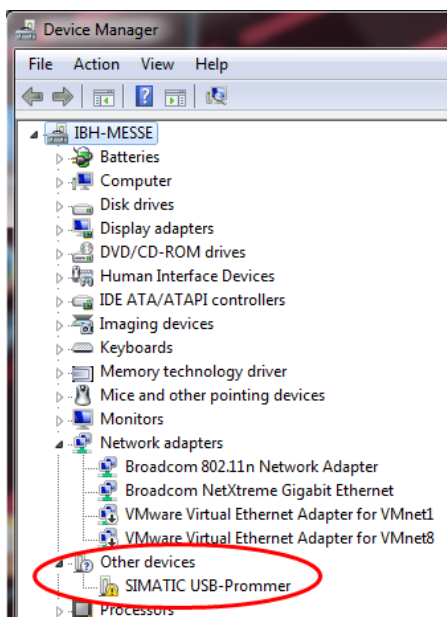
Check whether the Siemens USB-Prommer driver is installed

If the USB-Prommer is connected to the PC, check within the **device manager** whether the Siemens USB-Prommer driver is installed.

Siemens driver for the USB-Prommer is *already* installed on the PC:



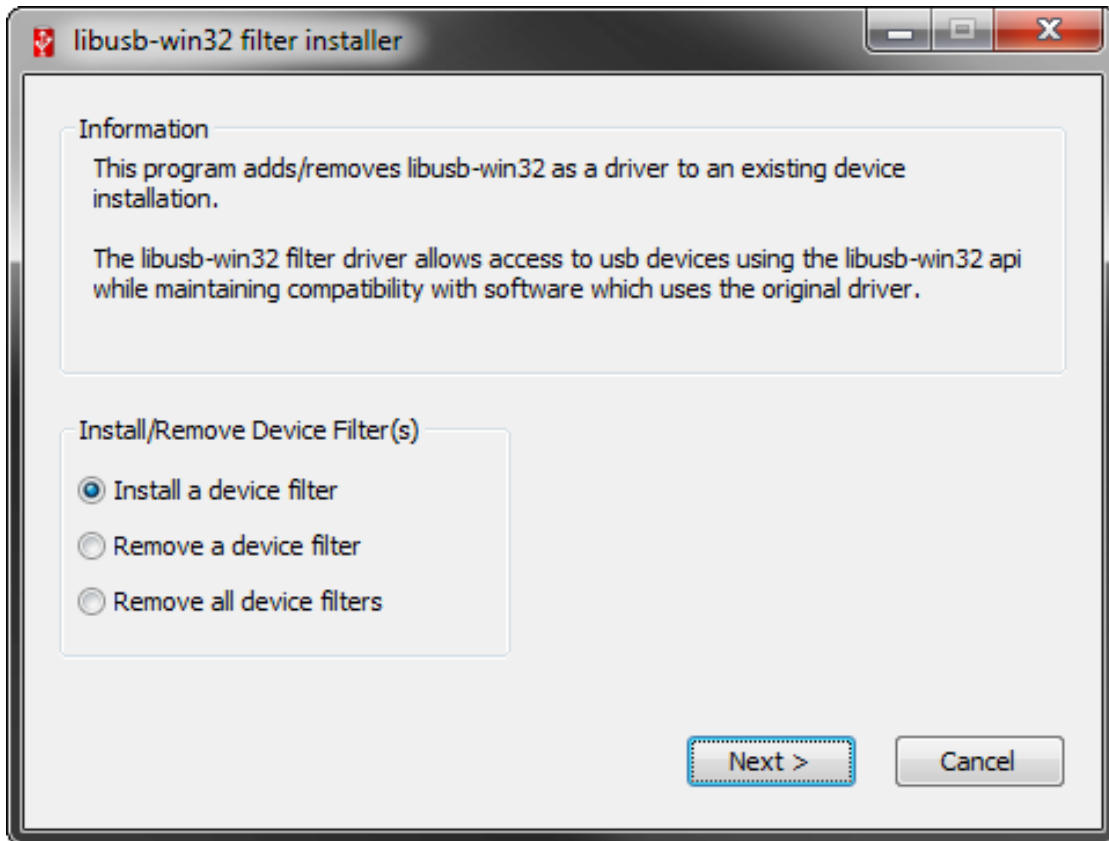
Siemens driver for the USB-Prommer is *not* installed on the PC:



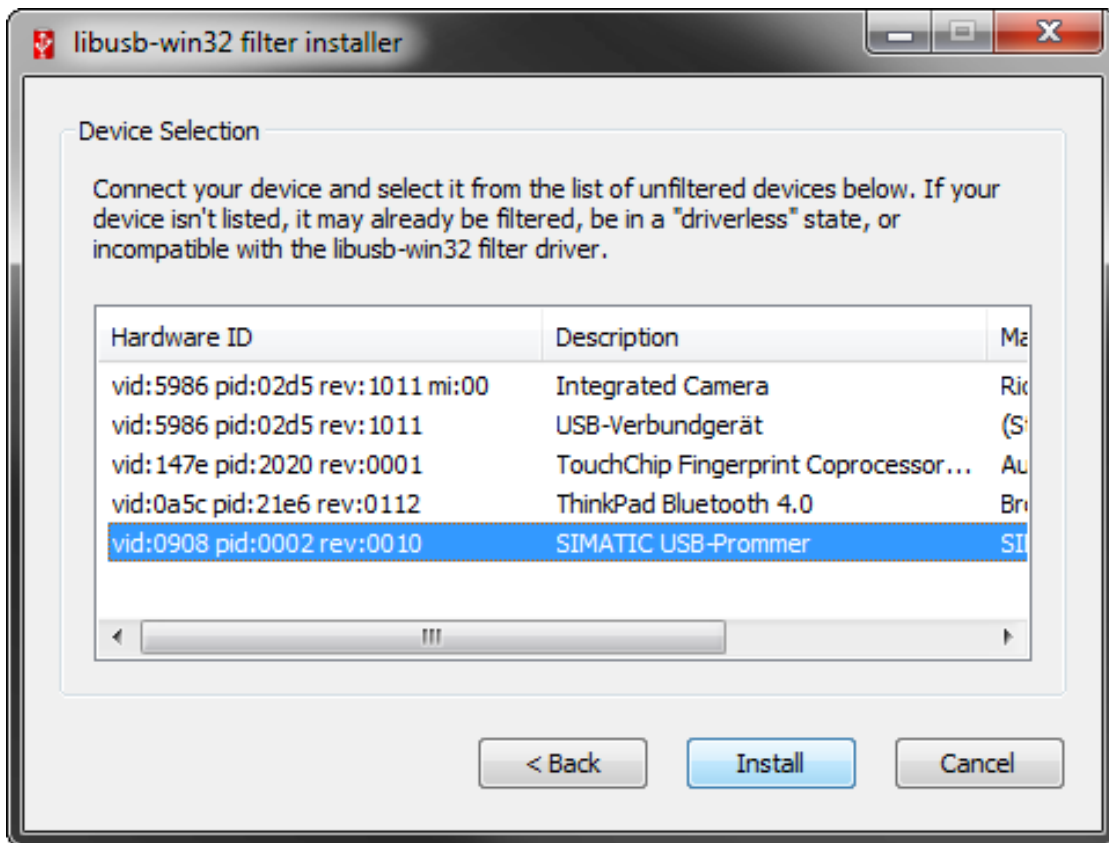
Installation of the libusb driver with already installed Siemens driver

In this case the **libusb-win32 filter driver** must be installed. This allows a control of the USB prommer parallel to the already installed Siemens driver, without impairing its function.

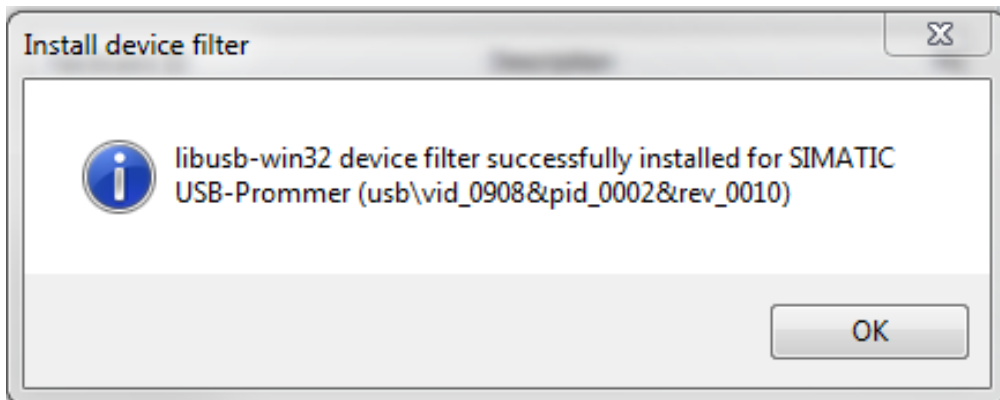
After the start of the Setup the option **Install a device filter** must be chosen.



After installation the **libusb-win32 filter installer** needs to be started. Within this program the entry for the USB-Prommer must be selected and the button **Install** must be pressed.



The successful installation is indicated by the following message:



The dialog can be closed. The installation is completed and the USB-Prommer can be used within S5/S7 for Windows®.

Installation of the libusb driver without installed Siemens driver

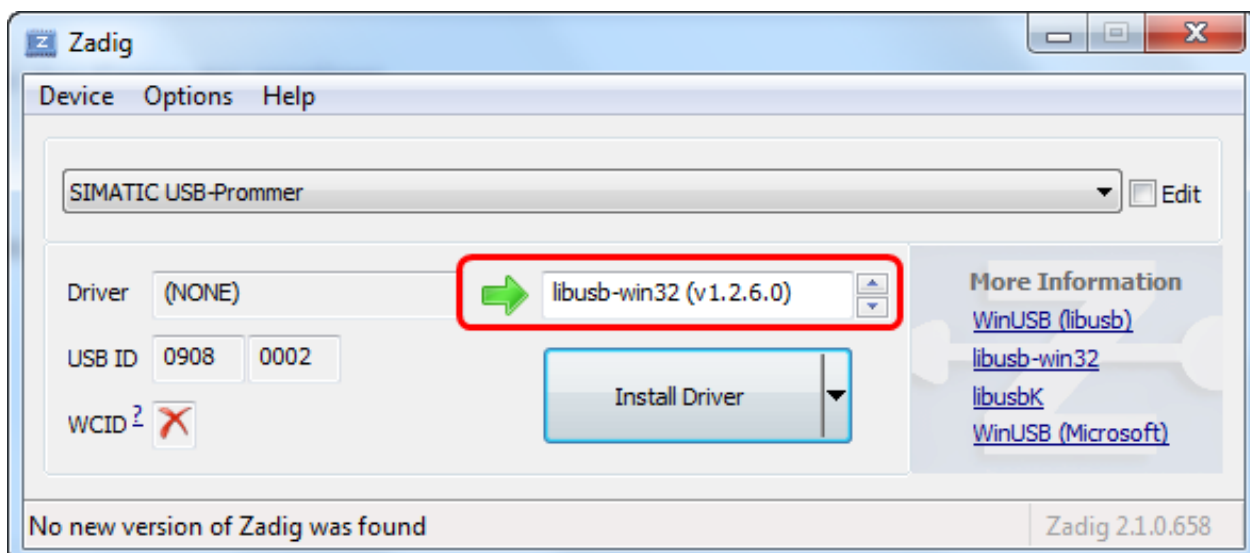
In this case the **ZAdik Device Treiber** must be installed.

When using the operating system **Windows XP** the setup with the file name **zadig_xp_2.1.0.exe** must be started.

When using the operating system **VISTA, Windows 7 or Windows 8** the Setup with the file name **zadig_2.1.0.exe** must be started.

After installation the **ZAdik Device Driver** will be started. Within this program the entry for the USB-Prommer and the driver **libsub-win32(v1.2.6.0)** must be selected and the button **Install** must be pressed.

The **libsub-win32 (v1.2.6.0)** must also be selected when using 64 bit operating systems!



The dialog can be closed. The installation is completed and the USB-Prommer can be used within S5/S7 for Windows®.

Using the Siemens driver without libusb driver

Caution: The supplied driver (10/2007) can only be installed on 32-bit systems. Newer versions of the driver only have support for S7 memory modules.

References

- [1] <http://www.ibhsofttec.com/USB-S5S7-Prommer-S-Eng>